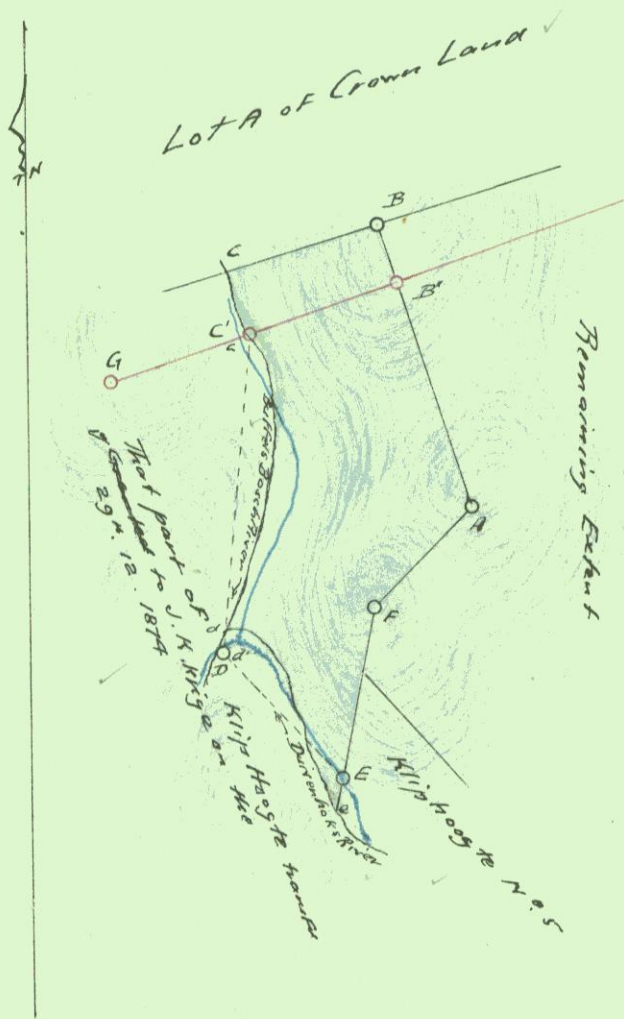


H. J. J. J.
Surveyor-General.

SIDES.		ANGLES.	
AB	247.71	A	117 52 40
BC	161.99	B	89 1 50
CD	336.23	C	113 48 20
DE	177.89	D	130 53 0
EF	178.54	E	54 56 0
FA	144.90	F	213 28 10

CO-ORDINATES.

	Y	X
A	+11989.56	+1036.85
B	+12063.60	+800.48
C	+12217.34	+851.51
D	+12249.24	+1186.22
E	+12126.40	+1314.89
F	+12091.54	+1139.79
G	+12362.05	+899.51
Heidelberg	+12591.698	+3032.887
Kruis Rivier	+9833.842	+1763.452



Rectil. Area fig: ABCDEF = 133 Morg. 80 sq. roods
 Curvilinear
 True Area fig: ABC' middle of River d' middle of River EF } = 108 Morg. 280 sq. roods



The above figure lettered ABC River d River e EF _____ represents 137 Morgen 200 Sq. roods of Land situated in the Division of Riversdale Being the Farm "Klein Kamp", portion of the farm "Klip Hoogte" Granted to P. E. Whit on the 29. Feb. 1836.

Portion 7 (Klein Kamp)

(a portion of Portion _____) of the farm

Klip Hoogte No. 83

RIVERSDALE

Bounded:—As indicated above.

I certify that this diagram belongs to the Transfer deed passed this day in favour of

J. B. T. Rall

Surveyed and beaconed by me according to Regulations.

14/10/1926 No 10218

H. J. J. J.
Government Land Surveyor.

Nov. 1926

BJ-8000

C
S
B