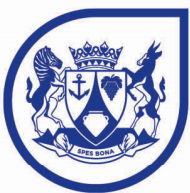


IZICWANGCISO ZASENTSHONA
KOLONI ZIKA-2023
EZINGEENTLOBO
ZEZILWANYANA NEZITYALO
EZAHLUKENEYO
NEZISHWANKATHELO
SEZIKHOKELO



Western Cape
Government
FOR YOU



CapeNature

Iziqulatho

Imvelaphi yeSicwangciso saseNtshona Koloni sika-2023 esingentlobo zezilwanyana nezityalo ezahlukeneyo nezinto eziphilayo.....	3
Iinjongo zeSicwangciso saseNtshona Koloni esingentlobo zezilwanyana nezityalo ezahlukeneyo	3
Inthetha yotshintsho	4
Incubeko yesizwe kwezendalo eNtshona Koloni	5
Usetyenziso olucetywayo nokuphunezwa kwezicwangciso ezingentlobo zezilwanyana nezityalo ezahlukeneyo nezinto eziphilayo (WCBS).....	6
Ukhankanyo lwabasebenzisi beWCBS ekujoliswe kubo.....	6
Isicwangciso esingentlobo zezilwanyana nezityalo ezahlukeneyo nezinto eziphilayo (WCBS).....	6
Iinkcazelo neenjongo zoLawulo zeeNdidi zeMephu yeSicwangciso seWCBS.....	7
Izikhokelo ngokusetyenziswa komhlaba.....	9
Ungazifumana njani iinkcukacha ezithe vetshe ngesicwangciso saseNtshona Koloni seNdalo (WCBS).....	12

Isicwangciso saseNtshona Koloni sika-2023seNdawo yeZinto Ezahlukeneyo Eziphilayo neSishwankathelo ngeZikhokelo

PR 57/2024

ISBN: 978-0-621-51892-4

Ucaphulo Olucetyiswayo

CapeNature. 2024. ***Izicwangciso zaseNtshona Koloni zika-2023 ezingentlobo zezilwanyana nezityalo ezahlukeneyo nezishwankathelo zezikhokelo.*** Ingxelo Engapapashwanga.

* Imibuzo mayibhekiswe ku- wcbasp2023@capenature.co.za

Imvelaphi yeSicwangciso saseNtshona Koloni sika-2023 esingentlobo zezilwanyana nezityalo ezahlukeneyo nezinto eziphilayo

Umthetho waseNtshona Koloni weZinto Zentlobo ngeNtlobo Eziphilayo onguNombolo 6 ka-2021 (WCBA) uyakuqonda ukwahluka ngokukhethekileyo kwizinto ezahlukeneyo eziphilayo eNtshona Koloni, izibophelelo zeRiphabliki kumazwe aphesheya, ukuxhomekeka kwephondo kwiinkonzo zobudlelwane bendalo, imfuneko yokukwazi ukufumana kunye nokwabelana ngeenzuzo, kunye nemfuneko yokuqinisekisa ukomelela unxulumano lwendalo kwixesha elide. Enye yeendlela eyisungulayo ukuqinisekisa ukuba kuyakwazi ukuphunyezwa ezi mfuneko yileyo yeSicwangciso saseNtshona Koloni seNdawo yeNtlobo ngeNtlobo yezinto Eziphilayo (WCBSP). Esi sicwangciso, esasukela kwiSicwangciso sika-2017, lunamacandelo amabini abalulekileyo:

- Uxwebhu lweSicwangciso saseNtshona Koloni seNdawo yeNtlobo ngeNtlobo Eziphilayo (WCBSP): Olu xwebhu lubanzi ludandalazisa isikhokelo seqhinga-nkqubo locwangciso lweendawo. Luqulunqwe ngokuhambelana neemfuno ezichazwe kwiSahluko sesi-5 soMthetho waseNtshona Koloni weZinto Ezahlukeneyo Eziphilayo (Umthetho onguNombolo 6 ka-2021).
- Umthombo woLwazi weSicwangciso saseNtshona Koloni seNdawo yeZinto Ezahlukeneyo Eziphilayo (Imephu ye-WCBSP Map): Isixhobo esiluncedo sokubonisa indawo, imephu yeWCBSP inikeza ngolwazi olubalulekileyo ngendlela ebonisa ubume bezinto endaweni.

Injongo yezimvekiliso kukuchonga izinto eziziziseko sendalo ephondweni kwaye lukhokhelise phambili iindawo ezinendidi zobutyebi, ngelixa lukwaqinisekisa uphuhliso oluzinzileyo. Ngokuphandle, i-WCBSP iqinisekisa ukuthathwa kwezizigqibo ngokufanelekileyo kwindawo ebuthathaka ephakathi kwendalo kunye nenkqubela-phambili.

Injongo zeSicwangciso saseNtshona Koloni esingentlobo zezilwanyana nezityalo ezahlukeneyo

I-WCBSP yasungulwa kusetyenziswa imigaqo kunye neendlela zocwangciso lwezinto ezahlukeneyo eziphilayo. Ichonga inethiwekhi ebanzi kwiphondo yeendawo eziphambili ezinezinto ezahlukeneyo eziphilayo kwiiNdawo Ezibalulekileyo Ezinezinto Ezahlukeneyo Eziphilayo (CBAs) kunye neeNdawo zeNkxaso yoNxulumano lweNdalo (ESAs) eziyilelwe ukufezekisa iinjongo njengoko zichaziwe kwiSahluko sesi-5 iCandelo 34-35 lweWCBA.

Icandelo 35 le WCBA lichaza ukuba injongo yeSicwangciso seNdawo yeZinto Ezahlukeneyo Eziphilayo:

- Kukumisela oko kujoliswe kuko ngokubhekisele kwizinto ezahlukeneyo eziphilayo.
- Ukuchonga ngokweendawo udidi olunye okanye ngaphezulu lweendawo eziphambili ezinezinto ezahlukeneyo eziphilayo neziya kuqinisekisa ukuba izinto ezahlukeneyo eziphilayo kunye nobudlelwane bendalo buhlala buhleli futhi busebenza, kuquka nonikezelo lweenkonzo ezingobudlelwane bendalo.

Ukomelela koNxulumano lweNdalo

Ukukwazi kobudlelwane bendalo ukugcisa iipateni zabo eziqhelekileyo zokujikelezisa izondlo kunye nokukhula kwezityalo naxa sebufumene umonakalo obangelwe kukuphazamiseka konxulumano lwendalo okanye okwenziwe ngabantu.

Iinkonzo Zobudlelwane beNdalo

Iinzuzo ezifunyanwa ngabantu kubudlelwane bendalo, eziquka:

- (a) iinkonzo zonikezelo ezifana noveliso lokutya kunye nonikezelo lwamanzi.
- (b) iinkonzo zokulawula, ezifana nolawulo lwemozulu, ubunjani bomoya okanye izifo kunye nokuncitshiswa komngcipheko weentlekele.
- (c) iinkonzo ezixhasayo, ezifana nojikeleziso lwezondlo, ukwakeka komhlaba kunye nochumiso lwezityalo ngepholeni.
- (d) iinkonzo zenkcubeko, njengeenzuzo zezomoya nezokuzonwabisa.

Ucwangciso olucwangcisiweyo lwezinto ezahlukeneyo eziphilayo

Indlela yokucwangcisa esebenzisa isofthiwe ukubona iindawo eziphambili ezinezinto ezahlukeneyo eziphilayo ngokuqulunqa ulwazi olungendawo ukwenzela izinto ezininzi ezahlukeneyo eziphilayo (izilwanyana nezityalo) kunye neenkqubo ngezindalo (climate movement corridors, iindawo zoveliso lwamanzi, njalo njalo.) ize igqibe ekubeni ingakanani eyona ndawo incinci idingekayo ukuzikhusela. Ngaxeshanye izama ukuthintela ungquzulwano kunye nezinye iindlela zokusetyenziswa komhlaba, ithanda iindawo ezibalulekileyo kubudlelwane bendalo beendawo zamanzi amatsha kunye nokhuselo lwamanzi kwaye ikhuthaza iindawo ezineendlela zokunciphisa ngokukuko ifuthe lokutshintsha kwemozulu kunye nokuqinisekisa unxulumano kwinkangeleko yomhlaba ngokubanzi.

- Ukunika izikhokelo ezichaza iinjongo zolawulo ezinqwenelwayo ngokunxulumene nokusetyenziswa komhlaba nezibonelelo kudidi ngalunye lweendawo eziphambili ezinezintlobo ezahlukeneyo ze Ndalo..
- Ukunika izikhokelo ngocwangciso lwendawo kunye nokwenziwa kwezizigqibo ukuqinisekisa uphuhliso oluzinzileyo lokusingqongileyo kunye nosetyenziso lwezibonelelo, kananjalo nokomelela konxulumano lwendalo nolweendawo ephondweni.
- Ukuqinisekisa ukuba izinto ezizisiseko zendalo kwiphondo ziyagcinwa, ukwahlulwa kobudlelwane bendalo futhi kuthintelwa ukuphela kwezinto, futhi kuqiniswa ukomelela kobudlelwane bendalo kwaneendawo ezihlala abantu ngokubhekisele kwiimpembelelo zokutshintsha kwemozulu.

IMephu yeWCBSBP yiyo esisikhokelo kumalinge olawulo lwezibonelelo zendalo nawolondolozo, nto leyo eyenza kukwazi ukujoliswa ngokukuko kwiinjongo ezinxulumene nezinto ezahlukeneyo eziphilayo. Ngaphezulu, zineda abo benza izicwangciso ekuhloleni ukuba iindlela ezahlukeneyo zokusetyenziswa komhlaba zinafute lini na kwindalo nasebantwini. Ezi mephu azincedi nje kuphela kucwangciso lolawulo lolondolozo koko kananjalo ekudibaniseni ngokuqhubekayo izinto ekumele ziqwalaselwe ngokubhekisele kwizinto ezahlukeneyo eziphilayo kunye nocwangciso lophuhliso nolwakiwo.

Inthetha yotshintsho

I WCBSBP ka-2023 ikhokelwa yintetha yotshintsho ukuqonda ukuba iziphumo ziyakukhokelela njani kwiinjongo zayo kunye neembono.

Umbono	Ukubekwa phambili kwezinto ezahlukeneyo eziphilayo kunye nobudlelwane bendalo kukhuselwe futhi kuyalondolozwa eNtshona Koloni, ukuqinisa ukomelela kobudlelwane bendalo kunye nonikezelo lweenkonzo zobudlelwane bendalo ezinxulumeneyokwiindawo zokuhlala, ukwehlisa ifuthe lotshintsho lwemozulu.			
Umnqophiso	Ukunikeza nokuphumeza isicwangciso sendawo yezinto ezahlukekeyo eziphilayo esinokukwazi ukuhlanganiswa kuwo onke amasebe ukujongana nelahleko enxulumene nezinto ezahlukekeyo eziphilayo kwaye sixhase ukomelela kwezinto ezizisiseko zendalo kunye nophuhliso oluzinzileyo lomntu wonke.			
Ingxelo yeNgxaki	<ul style="list-style-type: none"> • Ilahleko yezinto ezahlukekeyo eziphilayo engazange ibonwe ngaphambili. • I-109 kuma-349 zeendidi zobudlelwane bendalo eNtshona Koloni ziseBungozini Obubi Kakhulu. • I-16% ye-extant taxa eNtshona Koloni isebungozini. • Utshintsho lwemozulu lulwenza lukhulu nangakumbi ifuthe leentlekele kwiindawo ezihlala abantu. • Uphuhliso olungazinzanga kunye neendlela zokusetyenziswa komhlaba ezingafanelekanga zenza ukuba izilwanyana ziphelelwe ziindawo zazo zokuhlala. • Ukwehla kwesimo sezinto ezizisiseko sendalo. • Ukungasetyenziswa ngendlela efanayo yezikhokelo ze-WC BSP xa kusenziwa izigqibo nocwangciso ngosetyenziso lomhlaba. 			
Iinjongo	Ukumiselwa koko kujoliswe kuko ngezinto ezahlukeneyo eziphilayo.	Ukuchongwa kweeNdawo eziphambili ezinezinto ezahlukeneyo eziphilayo.	Izikhokelo ngokusetyenziswa komhlaba ezenzelwe iinjongo zolawulo zodidi ngalunye lweNdawo Ephambili Enezinto Ezahlukeneyo Eziphilayo esunguliweyo.	
Izixhobo zokusebenza	Amaqonga afumanekayo edatha engeendayo kunye nezikhokelo zosetyenziso lomhlaba.	Imithetho efanelekileyo nekwaziyo ukuba ithotyelwe engezinto ezahlukeneyo eziphilayo.	Ucwangciso oluhlangeneyo lamasebe aliqela.	Amaqonga entsebenziswano ephondo noomasipala axhasa ukubandakanywa nokuxhotyiswa ngezakhono.
Iinjongo	Iindawo Eziphambili Ezinezinto Ezahlukeneyo Eziphilayo (iiNdawo Ezibalulekileyo Ezinezinto Ezahlukeneyo Eziphilayo neeNdawo zeNkxaso yoNxulumano lweNdalo) ezikhuselwe ngokuthathwa kwezizigqibo zosetyenziso lomhlaba ezisekelwe kulwazi.	Izikhokelo Zosetyenziso nocwangciso lomhlaba zeeNjongo zoLawulo Ezinqwenelwayo zodidi ngalunye lweNdawo Ephambili Enezinto Ezahlukeneyo Eziphilayo zisetyenziswa ukugcina unxulumano lwendalo luhlale lunjalo kunye nozinto nokomelela kobudlelwane bendalo.	Izinto eziphambili ngokubhekisele kwizinto ezahlukeneyo eziphilayo zifakwe ekuthathweni kwezizigqibo.	Ukomelela kobudlelwane bendalo kunye neendawo zabantu zokuhlala kwiimpembelelo zokutshintsha kwemozulu zenziwe zomelele.

Uveliso	Ugunyazizo ngokubhekisele kokusingqongileyo lusekelwe kwiWC BSP.	Izikhokelo zoomasipala ezingophuhliso lweendawo zibonisa iindidi ezihlanganisa iindawo eziphambili ezinezinto ezahlukeneyo eziphilayo kwi-WC BSP.	Imveliso ezingundoqo kunye nezenzo zokuxhobisa ngezakhono.	
Iziphumo	Usetyenziso nocwangciso lomhlaba lusekelwe kweyona nzululwazi iphambili ikhoyo.	Ukuthotyelwa ngokungcono kwemithetho enxulumene nezinto Ezahlukeneyo Eziphilayo.	Ukugcinwa kwezinto eziziziseko zendalo.	Ukuphunyezwa koko kujoliswe kuko ngokubhekisele kwizinto Ezahlukeneyo Eziphilayo.

Incubeko yesizwe kwezendalo eNtshona Koloni

iNtshona Koloni ikummandla osemazantsi ntshona waseMzantsi Afrika, ijikelezwe luLwandle i-Indian emazantsi kunye noLwandle i-Atlantic kwicala elingasentshona nasemazantsi ntshona, malwandle lawo mabini ahlangana eCape Agulhas, eyona ndawo isemazantsi yase-Afrika. Ikakhulu iyindawo esoloko inemvula ebusika, kunye nehlobo elifudumeleyo ukuya kwelishushu kwakunye neemvula ezipholileyo ebusika, enemozulu efanayo nezinye iintlobo zobudlelwane bendalo beMediterranean ezikwindawo yaseMediterranean, iindawo ezithile eChile, eCalifornia, nakwiindawo ezithile zaseMazantsi Ntshona kunye naseMazantsi Mpuma e-Australia. Imvula inetha ngokulinganayo unyaka wonke ukuya kwicala elingasempuma kubekho neemvula ezingezizo ezexesha lonyaka kwiKoloni esemaZantsi. Imvula iyancipha ngakumbi kwiindawo ezingekho ngaselunxwemeni, nalaphi iiNtaba ze-Cape Fold zithi ziyisithe imvula. Ummandla weNama Karoo okwiindawo ezisemantla mpuma kwiphondo uneemvula ezininzi kakhulu zasekupheleni kwehlobo neziba neendudumo ezimandla.

Eyona milambo iphambili yaseNtshona Koloni yiMilambo iBerg, iBreede, i-Olifants kunye neGouritz, kwaye omnye nomnye kuyo wenza umsebenzi obalulekileyo ngokunxulumene neemfuno zamanzi zamacandelo ohlukeneyo oqoqosho kwiphondo elomileyo kakhulu ubukhulu becala. Iintaba ezikhankanywe apha ngasentla ziziindawo ezibalulekileyo ezibamba amanzi emvula ukwenzela imilambo, nanjengoko ezi ngingqi ziba neemvula ezininzi. Indibaniselwano yokwahluka okukhulu kwetopografi, nokuthi kukhokelele kumazinga aphezulu okuguquguquka kwemozulu kwimigama emifutshane, ukwahluka kwijiyoloji kunye nemihlaba kubangele amazinga aphezulu eNtshona Koloni, ingakumbi kuMmandla weCape Floristic kunye neSucculent Karoo Biome.

Ummandla weCape Floristic ngummandla omhle oneentlobo-ntlobo zezinto eziphilayo ezingaqhelekanga kunye nezizezendawo leyo. Ngaphakathi kulo mmandla mncinci, kuchuma iintlobo-ntlobo zezityalo zevascular ezingaphezulu kwe-9,000, nalapho iipesenti ezingama-69 percent zazo izizityalo ezisoloko zikho kulo ndawo. Uninzi lwezi zityalo zihle ziziintlobo ngeentlobo zinxulunyaniswa ne-fynbos biome, eluhlobo lweMediterranean, neyimithana ekhula kancinci ibe ngamatyholo athandwa yimililo. Zithatha indawo engaphantsi kwe-0.5 pesenti yendawo engumhlaba yase-Afrika, ezi zityalo zixhasa malunga neepesenti ezingama-20 zeentlobo-ntlobo zezityalo kwilizwekazi. Le ndawo ilikhaya kolona xinwano lukhulu lweentlobo zezityalo eziphambili ezingezizo ezetropika kwihlabathi jikelele. Okumangalisayo kukuba, ilikhaya kwiintsapho zezityalo ezintlanu kwezili-12 ezisoloko zikho eMzantsi Afrika kunye ne-160 ezizezendawo leyo. Oku kwahluka kwezinto kunegalelo elikhulu kuqoqosho lwenginqi, nalapho ushishino ngeentyatyambo zasendle lulodwa nje kuphela lwenza igalelo eliqikelelwa kwi-R150 miliyoni rhoqo ngonyaka kwiMveliso yeLizwe yaseNtshona Koloni.

Nakuba kunjalo, ummandla osentshona koloni ujongene nemiceli-mngeni emikhulu. Izenzo ezingazinzanga zokusetyenziswa komhlaba, iintlobo zezityalo ezingezizo ezendawo leyo ezihlaselayo, iipateni ezitshintshayo zemozulu, iziphumo zotshintsho lwemozulu, kwaye noxinzelelo lophuhliso lubeka emngciphekweni ezo ndawo zingamakhaya azo. Ngenxa yezi zinto ziyimiceli-mngeni namazinga aphezulu ezinto ezifumaneka kwindawo ethile kunye nokwahlukana kwezinto, ifumene iwonga lokuba yiNdawo Enezinto Ezahlukeneyo Eziphilayi kwiHlabathi jikelele. Ukuqinisekisa ulungelelwano olubuthathaka phakathi kokukhusela izinto ezahlukeneyo eziphilayo kunye nokukhuthaza uphuhliso lolwakiwo noqoqosho kuhlala kungumceli-mngeni oqhubekayo nobalulekileyo.

Usetyenziso olucetywayo nokuphunyezwa kwezicwangciso ezingentlobo zezilwanyana nezityalo ezahlukeneyo nezinto eziphilayo (WCBSP)

I-WCBSP kujongwe ekubeni ibe yeyona ndlela yokufundisa iphambili malunga nendawo yezinto ezahlukeneyo eziphilayo eNtshona Koloni. Imephu yeWCBSP kunye nezikhokelo ezinxulumeneyo zinokusetyenziswa kwiindidi ezintlanu eziphambili zosetyenziso ekwenziweni kwezigqibo ezinxulumene nokusetyenziswa komhlaba nezibonelelo:

- **Ulondolozo lwendalo kwangexesha:** njengokubona umhlaba onexabiso eliphezulu ngokwezinto ezahlukeneyo eziphilayo ukwenzela ukwandiswa kunye nokuhlanganiswa kweendawo ezikhuselweyo, nokuba kungezivumelwano zolawulo lwezinto ezahlukeneyo eziphilayo, ukuthathwa komhlaba okanye ezinye izixhobo ezinokuthi ziveliswe, umz. iqhinga-nkqubo lolinganiso / ulinganiso kokubhanka.
- **Ukwenza izicwangciso zangaphambili kwangoko:** njengokudityaniswa kwe-CBAs, i-ESAs, kunye nezikhokelo zosetyenziso lomhlaba kwizixhobo zocwangciso lwendawo zikamasipala wengingqi okanye izixhobo zolawulo lokusingqongileyo.
- **Izicelo zophuhliso:** njengezicelo zoGunyaziso Lokusingqongileyo ngokwemimiselo yoMthetho kaZwelonke woLawulo Lokusingqongileyo onguNombolo 107 ka-1998 (NEMA); izigqibo ngosetyenziso lomhlaba kulimo (umz., iimvme zokulima) ngokwemimiselo yoMthetho woLondolozo lweZibonelelo zoLimo onguNombolo 43 ka-1983 (CARA); izigunyaziso zokukhangela nokwemiwa kwemigodi ngokwemimiselo yoMthetho woPhuhliso lweZibonelelo zeZimbiwa nePetroleum onguNombolo 28 ka-2002 (MPRDA) kwakunye neNEMA, kunye nezigqibo ezingocwangciso lokusetyenziswa komhlaba ngokwemimiselo yoMthetho woCwangciso lweNdawo noLawulo Lokusetyenziswa koMhlaba onguNombolo 16 ka-2013 (SPLUMA) kunye noMthetho woCwangciso Lokusetyenziswa koMhlaba waseNtshona Koloni onguNombolo 3 ka-2014 (LUPA).
- **Uvuselelo:** njengokukhangela iindawo eziphambili ezinezinto ezahlukeneyo eziphilayo ezidinga ukuvuselelwa okanye esinye isenzo zokuphucula imeko yokusingqongileyo kunye nokuvuselela ipateni yezinto ezahlukeneyo eziphilayo kuye neenkqubo zonxulumano lwendalo.
- **Ulondolozo olwenzele ulawulo:** lunceda ekuchongweni kweendawo ezingathi zibekho zokulawula.

Ukhankanyo lwabasebenzisi beWCBSP ekujoliswe kubo

I-WCBSP kumele isetyenziswe ngawo onke amacandelo abandakanyekayo kucwangciso nokwenziwa kwezigqibo ngosetyenziso lomhlaba eNtshona Koloni ukuqinisekisa ukukhuselwa kwezinto ezahlukeneyo eziphilayo kunye nezinto ezisisiseko zendalo kwakunye nonikezelo lweenkonzo ezibalulekileyo ngobudlelwane. Oku kuquka abasebenzisi (umz., amasebe karhulumente) ekudingeka ukuba asebenzise isicwangciso esi ukufezekisa iimfuno zasemthethweni okanye ezemigaqo-nkqubo, kwakunye nabo basebenzisi abasifumana siyindawo yolwazi eluncedo kwiinkqubo zabo zocwangciso.

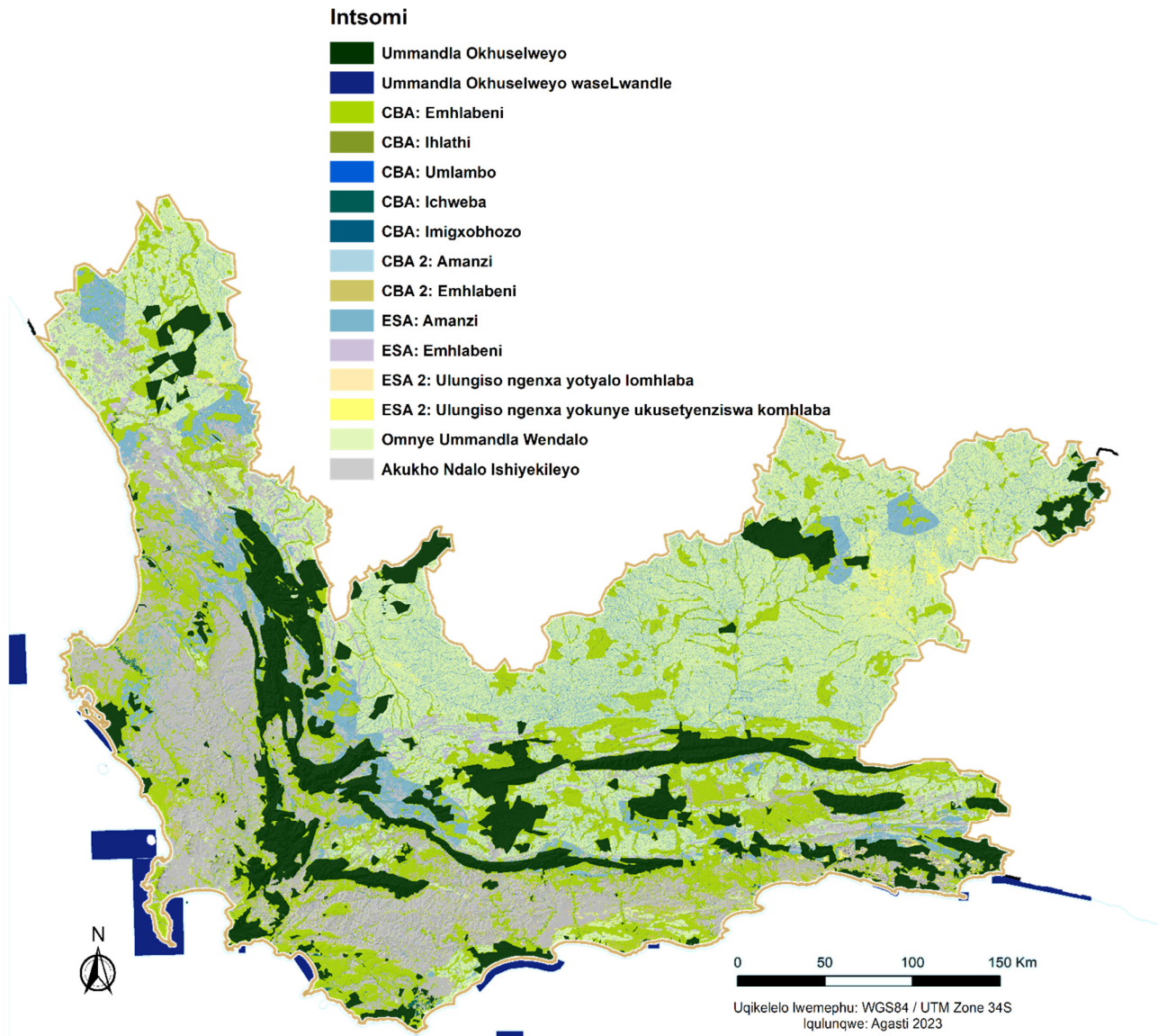
Abona basebenzisi baphambili beWCBSP baquka amasebe karhulumente kazwelonke nawamaphondo, ii-arhente zolondolozo lwendalo, abacwangcisi beendawo kunye namanye amagosa koomasipala bendawo nabengingqi, iingcali ngokusingqongileyo kuquka iingcali zovavanyo locwangciso nokusingqongileyo, izazinzulu ngezinto ezahlukeneyo eziphilayo nolondolozo lwendalo ezikumaziko ophando, icandelo labucala kunye nemibutho yentlalo, abaqulunqi bamaqhinga-nkqubo abanxulumene neenkqubo zolawulo lwezindalo (umz., Ukusebenzela Amanzi, Ukusebenza Emlilweni, kunye nokuSebenzela Imigxobhozo), kwakunye nabanikazi bemihlaba abaceba ukutshintsha indlela abawusebenzisa ngayo umhlaba.

Isicwangciso esingentlobo zezilwanyana nezityalo ezohlukeneyo nezinto eziphilayo (WCBSP)

Uxwebhu lwe-WCBSP lusebenza njengerekhodi egunyazisayo exhasa zonke iinkalo eziyinxalenye yeSicwangciso seNdawo yeZinto Ezahlukeneyo Eziphilayo. Aluchazi nje kuphela ukutyeba kolwazi olungezinto ezahlukeneyo eziphilayo kunye nosetyenziso lomhlaba nolwakhokelela ekuqulunqweni kweMephu yeWCBSP, koko lukwanikeza ngezikhokelo ezibalulekileyo ezingosetyenziso lomhlaba ukuzama ukuphucula ulawulo olululo lwezinto ezahlukeneyo eziphilayo.

Imephu yesicwangciso sendawo yezinto ezahlukeneyo eziphilayo

I-WCBSP iquka imephu yezinto ezahlukeneyo eziphilayo ebonisa iiNdawo Eziphambili Ezinezinto Ezahlukeneyo Eziphilayo (CBAs) okanye iiNdawo zeNkxaso yoNxulumano lweNdalo (ESAs), ezidinga ukukhuselwa kwiphondo lonke, ichaphazela iindawo ezisemhlabeni, kwanezo ezisemachibini nasemilanjani, ngokunjalo neendawo eziphambili ezihlala izilwanyama elunxwemeni nasechwebeni (**Umboniso I**). Le mephu, enemaleko emininzi, inikeza ngedata efanelekileyo engendawo ebalulekileyo xa kusenziwa izigqibo ezingocwangciso neziya kukhokelela kuphuhliso oluzinzileyo kwakunye nolondolozo lwezinto ezahlukeneyo ezibalulekileyo eziphilwayo kunye nezinto eziziziseko zendalo.



Umboniso I: Isicwangciso saseNtshona Koloni seNdawo yeZinto Ezahlukeneyo Eziphilayo sika-2023

linkcazelo neeNjongo zoLawulo zeeNdidi zeMephu yeSicwangciso seWCBSP

Ukuquka izinto eziphambili ngokubhekisele kwizinto ezahlukeneyo eziphilayo kwizicwangciso zendawo zoomsipala esele zikho, oomasipala basungule iinkqubo zokwahlula umhlaba ngokokusetyenziswa kwawo njengenxenye yeZikhokelo Zophuhliso lweNdawo ekumele zihambelane neendidi ezahlukeneyo zeWCBSP (ngokweCandelo 37(c) leWCBA). Amacandelwana angaphantsi awohlukeneyo weNdawo Ephambili Enezinto Ezahlukeneyo Eziphilayo, iintsingiselo zawo kunye neenjongo ezinqwenelwayo zolawulo zishwankathelwe **lthebhule I**.

Ithebule 1: Isishwankathelo ngeendidi zemephu neentsingiselo zazo.

Udidi lweMephu	Inkcazelo	Injongo Enqwenelwayo yoLawulo	Udidi olungaphantsi
Ummandla Okhuselweyo	lindawo ezibhengezwe ngengeendawo ezikhuselweyo ngokwemithetho kazwelonke neyamaphondo.	Kumele zigcinwe zikwisimo sendalo, ngesicwangciso solawulo esingqale ekugcineni nasekwenzeni ngcono isimo sezinto ezahlukeneyo eziphilayo. Umlinganiselo wezinto ezahlukeneyo eziphilayo.	
Indawo yoku-1 Ebalulekileyo yeZinto Ezahlukeneyo Eziphilayo	lindawo ezikwimo yendalo ekudingeka ukuba zifizekise oko kujoliswe kuko ngokwezinto ezahlukeneyo eziphilayo, ukwenzela iintlobo ezahlukeneyo zezityalo, ubudlelwane bendalo okanye iinkqubo zoxulumano neziseko zendalo.	Ukuyigcina ikwisimo sendalo okanye iphantse ibe kwisimo sayo sendalo, kungekho kuphela kungakumbi kweendawo ezihlala izilwanyana. lindawo esehlileyo isimo sazo kufuneka zibuyiselwe kwisimo sangaphambili.	Umlambo Ichweba Imigxobhozo Ihlathi Emhlabeni
Indawo yesi-2 Ebalulekileyo yeZinto Ezahlukeneyo Eziphilayo	lindawo ezinesimo sazo esehlileyo okanye esingasafaniyo nakuqala ekudingeka ukuba zifizekise oko kujoliswe kuko ngokubhekisele kwizinto ezahlukeneyo eziphilayo, ukwenzela iintlobo ezahlukeneyo zezityalo, ubudlelwane bendalo okanye iinkqubo zoxulumano neziseko zendalo.	Ukugcina kwisimo esisebenzayo, sendalo, okanye esikufuphi neso sendalo, kungekho monakalo ugaphaya weendawo ezingamakhaya endalo kwizityalo nezilwanyana. Ezi ndawo kufuneka zibuyiselwe kwisimo sazo sangaphambili.	Sehlile isimo sayo
Indawo yoku-1 yeNixaso yoNxulumano lweNdalo	lindawo ezingabalulekanga ekufezekiseni oko kujoliswe kuko ngokubhekisele kwizinto ezahlukeneyo eziphilayo kodwa ezidlala indima ebalulekileyo ekuxhaseni ukusebenza kwe-PAs okanye i-CBAs kwaye zisoloko zibalulekile ekunikezeleni ngeenkondo ezinxulumene nobudlelwane bendalo.	Ukugcina kwisimo esisebenzayo, kunye neso sisondeleyo kwesendalo. Okunye ukonakala kweendawo ezingamakhaya endalo kwizityalo nezilwanyana kwamkelekile, xa nje iinjongo eziphambili ezinxulumene nezinto ezahlukeneyo eziphilayo kwakunye nokusebenza konxulumano lwendalo kungabekwanga emngciphekweni. Ukugcina nokuphucula iindawo ezikhuselweyo njengoko zichongiwe njengeMithombi Yamanzi ye-ESA kunye noTshajo Lwamanzi kubalulekile ekukhuseleni imithombo yamanzi, ingakumbi kwiiNdawo eziyiMithombo Yamanzi ngokweQhinga-nkqubo (SWSAs).	Umqolo okwingquzu yentlabathi Ihlathi Ikhoro Yotshitsho lweMozulu Ukhuselo lweZibonelelo Zaselunxwemeni Ubudlelwane Bendalo Obusengozini Umlambo Ichweba Imigxobhozo Ukhuselo lweMijelo yaManzi Ukhuselo loMthombo waManzi Ukhuselo loTshajo kwakhona kwaManzi
Indawo yesi-2 yeNixaso yoNxulumano lweNdalo	lindawo ezingabalulekanga ekufezekiseni oko kujoliswe kuko ngokubhekisele kwizinto ezahlukeneyo eziphilayo kodwa ezinendima ebalulekileyo ekuxhaseni ukusebenza kwe-PAs okanye i-CBAs. Zisoloko zibalulekile ekunikezeleni ngeenkondo ezinxulumene nobudlelwane bendalo.	Ukuvuselela kunye/okanye ukulawula ukuze kuncitshiswe ifuthe kukusebenza kwezinto ezisisiseko ngokwendalo; ingakumbi iinkondo ezinxulumene nomhlaba kunye namanzi.	Ulungiso Ngenxa Yezinto Ezingeyondalo
Indawo yeNixaso yoNxulumano lweNdalo: Iintlobo Ezithile Ezingaphezulu	Emhlabeni lindawo apho Kungekho Ndalo Ishiyekileyo ezinikeza umsebenzi wenkxaso ebalulekileyo kwizityalo nezilwanyana ezisengozini okanye ezikhuselweyo umz. Umhlaba olinyiweyo onxulunyaniswa neendawo zokuzalela/ zokulala.	Ukugcina indlela umhlaba osetyenziswa ngayo njengangoku okanye ukubuyisela kwisimo sendalo sangaphambili esisebenzayo.	Iintlobo Ezithile

Udidi lweMephu	Inkcazelo	Injongo Enqwenelwayo yoLawulo	Udidi olungaphantsi
Eminyane Imimandla Yendalo: Isimo seNdalo ukuya Kwesisondeleyo kweso seNdalo	Iindawo ezingachongwanga njengezo ziphambili kwisicwangciso sezinto ezahlukeneyo eziphilayo kodwa ezisabugcinileyo ubuninzi beempawu zazo zendalo kwaye ezenza imisebenzi eliqela enxulumene nezinto ezahlukeneyo eziphilayo kunye nezinto ezisisiseko zendalo. Zonke zisenendawo ebalulekileyo kubudlelwane bendalo.	Ukunciphisa ukuphela kweendawo ezingamakhaya ezilwanyana nezityalo kunye nokuqinisekisa ukusebenza kobudlelwane bendalo ngokusebenzisa ucwangciso lwendawo ngokweqhinga-nkqubo. Yenza ukuba usetyenziso lomhlaba oluvumelekileyo lukwazi ukwenziwa, kodwa kudingeka ugunyaziso kusetyenziso oluyakuthi lube nempembelelo enkulu.	Isimo seNdalo ukuya Kwesisondeleyo kweso seNdalo
			Sehlile isimo sayo
Akukho Ndalo Ishiyekileyo	Iindawo ezitshintshileyo ngenxa yokusetyenziswa ngabantu kangangokuba ayisezizo iindawo zendalo okanye azisakwazi ukufezekisa oko kujoliswe kuko ngokwezinto ezahlukeneyo eziphilayo. Ezi ndawo zisengakwazi ukuqhubeka zisenza imisebenzi engephi enxulumene nezinto ezahlukeneyo eziphilayo kunye nezinto ezisisiseko sendalo, nokuba ngaba azikho phambili nokomsebenzi wolondolozo.	Zilawulwe ngendlela enobuthathaka ngokunxulumene nezinto ezahlukeneyo eziphilayo, kujoliswe ekwandisweni kokusebenza kwazo ngokwendalo. Yenza ukuba kube nokukwazi ukubakho usetyenziso lomhlaba oluvumelekileyo, kodwa kusengadingeka ugunyaziso kusetyenziso oluyakuthi lube nempembelelo enkulu.	Akukho Ndalo Ishiyekileyo

Izikhokelo ngokusetyenziswa komhlaba

Into ezingqale kuyo izikhokelo ngokusetyenziswa komhlaba eziqulethwe kwiWCBSP kukubona usetyenziso lomhlaba oluhambelana nokugcina kunye nokuphumeza oko kujoliswe kuzo ngokwezinto ezahlukeneyo eziphilayo. Ngoko ke, kufanele, zisetyenziswe ndawonye nezikhokelo zamanye amasebe ezifanelekileyo ezingabe ziyafumaneka kwiphondo.

Injongo ephambili yezikhokelo ngokusetyenziswa komhlaba ezinikezwe apha ngezantsi kukunika isikhokelo kucwangciso kunye nokwenziwa kwezigqibo kwi-CBAs ne-ESAs zasemhlabeni nezamanzi amatsha ezibonwe emhlabeni ngaphandle kweendawo ezikhuselweyo. Kumacandelo alandelayo, kunikwe iziphakamiso ezibanzi ngodidi ngalunye olukwiMephu yeWCBSP, ngokunxulumene neeNjongo zoLawulo Ezinqwenelwayo kunye nosetyenziso lomhlaba olufanelekileyo. Izikhokhelo zokubona usetyenziso lomhlaba kwi-CBAs zinikeziwe [lthebhule 2](#).

Ithebhule 3 Iyaqhubeka: lindidi zeeNdawo Eziphambili Ezinezinto Ezahlukeneyo Eziphilayo kunye neMimandla Yosetyenziso loMhlaba ikunye neeNjongo zoLawulo Ezinqwenelwayo

Ewe Usetyenziso lomhlaba olufanelekileyo nolungenakufane lubeke emngciphekweni injongo enxulumene nezinto ezahlukeneyo eziphilayo	Luthintelwe Usetyenziso lomhlaba olungathi lubeke emngciphekweni injongo enxulumene nezinto ezahlukeneyo eziphilayo kwaye luvunyelwa kuphela ngaphantsi kwemiqathango ethile	Hayi Usetyenziso lomhlaba oluya kubeka emngciphekweni injongo enxulumene nezinto ezahlukeneyo eziphilayo kwaye aluvumelekanga
--	---	--

Imephu neeNdidi Zosetyenziso loMhlaba		Umandla Okhuselweyo	Indawo yoku-1 Ebalulekileyo yeZinto Ezahlukeneyo Eziphilayo	Indawo yesi-2 Ebalulekileyo yeZinto Ezahlukeneyo Eziphilayo	Indawo yoku-1 yeNkxaso yoNxulumano lweNdalo: Emhlabeni	Indawo yoku-1 yeNkxaso yoNxulumano lweNdalo: Amanzi	Indawo yesi-2 yeNkxaso yoNxulumano lweNdalo	Indawo yeNkxaso yoNxulumano lweNdalo: lintlobo Ezithile Ezingaphezulu	ONA: Eyendalo ukuya Kwepbantse ibe Yeyendalo	ONA: Sehlife isimo sayo	Akukho Ndalo Ishiyekileyo	
Ushishino noRhwabo	Ushishino kwiiNdawo Zasemaphandleni	Ukuseyenziswa komhlaba kwiindawo ezibhengezwe njengezo zikhuselekileyo kuxhomekeke kwisicwangciso solawulo esenzelwe indawo kanye leyo ikhuselweyo.	Hayi	Hayi	Luthintelwe	Hayi	Hayi	Hayi	Luthintelwe	Luthintelwe	Ewe	
	Ushishino olungabekelwanga ndawo ithile (impembelelo esezantsi ukuya kwephakathi)		Hayi	Hayi	Luthintelwe	Hayi	Hayi	Luthintelwe	Luthintelwe	Luthintelwe	Ewe	
	Ushishino olungabekelwanga ndawo ithile (impembelelo ephezulu)		Hayi	Hayi	Hayi	Hayi	Hayi	Luthintelwe	Luthintelwe	Luthintelwe	Ewe	
	Umbane Ovuselelwayo		Hayi	Hayi	Luthintelwe	Hayi	Luthintelwe	Hayi	Luthintelwe	Luthintelwe	Ewe	
	Ushishino Lokukhupha (kuquka Ukuhlola)		Hayi	Hayi	Hayi	Hayi	Hayi	Luthintelwe	Luthintelwe	Luthintelwe	Ewe	
Ufakelo Lweziseko Zophuhliso	Imigca – iindlela nezoololiwe		Hayi	Luthintelwe	Luthintelwe	Luthintelwe	Luthintelwe	Luthintelwe	Hayi	Luthintelwe	Ewe	Ewe
	Imigca – imibhobho nemijelo		Hayi	Luthintelwe	Luthintelwe	Luthintelwe	Luthintelwe	Luthintelwe	Luthintelwe	Luthintelwe	Ewe	Ewe
	Imigca – iintambo zombane		Luthintelwe	Luthintelwe	Luthintelwe	Luthintelwe	Luthintelwe	Luthintelwe	Luthintelwe	Luthintelwe	Ewe	Ewe
	Ezinye Izinto Eziluncedo		Hayi	Hayi	Luthintelwe	Hayi	Luthintelwe	Luthintelwe	Luthintelwe	Luthintelwe	Ewe	Ewe

Ungazifumana njani iinkcukacha ezithe vetshe ngesicwangciso saseNtshona Koloni seNdalo (WCBSP)

likopi ezi-elektronikhi zeWCBSP ziyafumaneka kule webhusayithi ilandelayo:

<https://www.capenature.co.za/western-cape-biodiversity-spatial-plan>

Imiqulu eprintiweyo yeWCBSP iya kufumaneka kumathala eencwadi kwaba masipala balandelayo/kwizakhiwo zikarhulumente:

iOfisi	Idilesi	uMasipala
iThala leeNcwadi loLuntu laseBeaufort West	15 Church Sitalato, eBeaufort West	uMasipala waseBeaufort West
iThala leeNcwadi loLuntu laseNoordhoek	kwiNdlela Voortrekker, eVelddrif	uMasipala waseBerg River
iThala leeNcwadi loLuntu lasePiketberg	eChurch Sitalato, ePiketberg	uMasipala waseBerg River
iThala leeNcwadi loLuntu lasePorterville	eMark Sitalato, ePorterville	uMasipala waseBerg River
kwiOfisi yeCapeNature, eKeurbooms Nature Reserve	7 Zenon Sitalato, ePlettenberg Bay	uMasipala waseBitou
iThala leeNcwadi loMmandla waseWorcester	22 Adderley Sitalato, eWorcester Central, Worcester	uMasipala waseBreede Valley
iThala leeNcwadi loLuntu laseBredasdorp	5 Church Sitalato, eBredasdorp	uMasipala waseCape Agulhas
iThala leeNcwadi loLuntu laseNapier	3 Newmark Sitalato, eNapier	uMasipala waseCape Agulhas
iThala leeNcwadi loLuntu laseStruisbaai	Kwikona yeFirst neBua e-Centre, eDenne Avenue, eSetruisbaai	uMasipala waseCape Agulhas
iThala leeNcwadi loLuntu laseCitrusdal	12 Muller Sitalato, eCitrusdal	uMasipala waseCederberg
iThala leeNcwadi loLuntu laseClanwilliam	25 iNdlela iMain, eClanwilliam	uMasipala waseCederberg
iThala leeNcwadi loLuntu laseLamberts Bay	36 Church Sitalato, eLamberts Bay	uMasipala waseCederberg
iOfisi kaMasipala waseBeaufort West	112 Donkin Sitalato, eBeaufort West	uMasipala waseCentral Karoo District
kwiOfisi eyiNdoko yeCapeNature	kwiKona yeBosduif neolstruis Sitalato, eBridgetown, Aethlone	iSixeko saseKapa
kwiHolo loLuntu laseMamre	Liedeman Sitalato, eMamre, eKapa	iSixeko saseKapa
iOfisi yeCapeNature, eLimietberg Nature Reserve	27 Mill Sitalato, eLemoenkloof, ePaarl	uMasipala waseDrakenstein
iHolo leDolophu yasePaarl	250 iNdlela iMain, ePaarl	uMasipala waseDrakenstein
iHolo loLuntu laseHuguenot	2A Abattoir Sitalato, eKlippiesdaal, ePaarl	uMasipala waseDrakenstein
iOfisi yeCapeNature, eOuteniqua Nature Reserve	Witfontein Forestry Station, Outeniqua Nature Reserve, kwiNdlela iWitfontein, eGeorge	uMasipala waseGeorge
iThala leeNcwadi loLuntu laseHeidelberg	1 Van Riebeeck Sitalato, eHeidelberg	uMasipala waseHessequa
iThala leeNcwadi loLuntu laseRiversdale	50 Van den Berg Sitalato, eRiversdale	uMasipala waseHessequa
iZiko loLondolozo leMwali laseCalitzdorp	Van Riebeeck Street, Calitzdorp	uMasipala waseKannaland
iHolo leDolophu laseLadismith	19 Queen Sitalato, eLadismith	uMasipala waseKannaland
iThala leeNcwadi loLuntu laseKnysna	2 Memorial Sitalato, eKnysna	uMasipala waseKnysna
iThala leeNcwadi loLuntu laseSedgefield	12 Flamingo Sitalato, eSedgefield	uMasipala waseKnysna
iThala leeNcwadi loLuntu laseLaingsburg	Van Riebeeck Sitalato, eLaingsburg	uMasipala waseLainsburg
iThala leeNcwadi loLuntu laseRobertson	30 Van Reenen Sitalato, eRobertson	uMasipala waseLangeberg
iThala leeNcwadi loLuntu laseEureka (eVredendal)	kwiNdlela iBult, eVredendal North	uMasipala waseMatzikama
iThala leeNcwadi loLuntu laseVanrhynsdorp	9 Church Sitalato, eVanrhynsdorp	uMasipala waseMatzikama
iThala leeNcwadi loLuntu laseVredendal	37 Church Street, Vredendal	uMasipala waseMatzikama
iThala leeNcwadi loLuntu laseMossel Bay	99 Marsh Sitalato, eMossel Bay	uMasipala waseMossel Bay
iOfisi yeCapeNature, eOudtshoorn	kwiSakhiwo seQueens Hotel, kwiSitalato iBaron van Reede, Oudtshoorn	uMasipala waseOudtshoorn
iiOfisi zeCapeNature, eWalker Bay	16 17th Avenue, eVoelklip, eHermanus	uMasipala waseOverstrand
iThala leeNcwadi loLuntu laseHermanus	66 Duiker Sitalato, eHermanus	uMasipala waseOverstrand
iThala leeNcwadi loLuntu laseKleinmond	44 e5th Avenue, eKleinmond	uMasipala waseOverstrand
iThala leeNcwadi laseStanford	155 iSitalato iQueen Victoria, eStanford	uMasipala waseOverstrand
iThala leeNcwadi loLuntu lasePrince Albert	iSitChurch, ePrince Albert	uMasipala wasePrince Albert
iThala leeNcwadi loLuntu laseVredenburg	2 iSitalato iAcadem, eLouville, eVredenburg	uMasipala waseSaldanha Bay
iThala leeNcwadi loLuntu laseFranschhoek	9 iSitalato iReservoir, eFranschhoek	uMasipala waseStellenbosch
iThala leeNcwadi loLuntu laseStellenbosch	Plein Sitalato, eStellenbosch Central, eStellenbosch	uMasipala waseStellenbosch
iThala leeNcwadi loLuntu laseMalmesbury	44 iNdlela iVoortrekker, eMalmesbury	uMasipala waseSwartland
iOfisi kaMasipala waseYzerfontein	46 iNdlela iMaine, eYzerfontein	uMasipala waseSwartland
iThala leeNcwadi loLuntu laseBarrydale	12 Bain Sitalato, eBarrydale	uMasipala waseSwellendam
iThala leeNcwadi laseSwellendam	51 Voortrek Sitalato, eSwellendam	uMasipala waseSwellendam
iThala leeNcwadi loLuntu laseGreyton	2 Hoof Sitalato, eGreyton	uMasipala waseTheewaterskloof
iThala leeNcwadi loLuntu laseRiviersonderend	28 Buitekant Sitalato, eRiviersonderend	uMasipala waseTheewaterskloof
iOfisi yeCapeNature, eWaterval	Waterval Nature Reserve, eTulbagh	uMasipala waseWitzenberg
iThala leeNcwadi eliNcinci laseOp die Berg	44 kwiNdlela iVoortrekker, eCeres	uMasipala waseWitzenberg
iThala leeNcwadi loLuntu laseTulbagh	iSitalato iPlein, eTulbagh	uMasipala waseWitzenberg

Ukufumana ulwazi olungaphezulu, nceda uqhagamshelane:

CapeNature

Private Bag X29, Gatesville, 7766

I-imeyile: wcbbsp2023@capenature.co.za

IDILESI YENDAWO

CapeNature
PGWC Shared Services Centre
Cnr Bosduif and Volstruis Streets
Bridgetown
Cape Town

IDILESI YEPOSI

CapeNature
Private Bag X29
Gatesville
7766

I-IMEYILE

wcbasp2023@capenature.co.za

IWEBHUSAYITHI

www.capenature.co.za



**Western Cape
Government**
FOR YOU

 /capenaturel

 @capenature

 @capenaturel